

FUSION

MODULAR DISPLAY SYSTEMS

MODULAR DISPLAY SYSTEMS



Anodised
aluminium poles

complete with
carry bag set

Single or double sided

MODULAR DISPLAY SYSTEMS

plex
DISPLAY
outdoor banner stands

FUSION

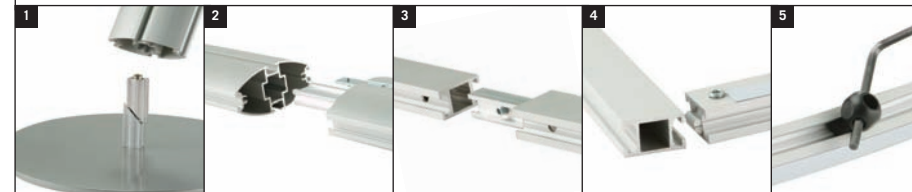
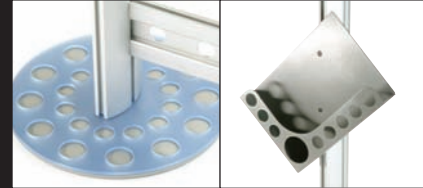
MODULAR DISPLAY

FUSION STRAIGHT SYSTEM

AN **INNOVATIVE** RANGE OF **CONTEMPORARY** GRAPHIC DISPLAY STRUCTURES. FEATURES INCLUDE **SLEEK SATIN ANODISED** ALUMINIUM PROFILES AND MAGNETICALLY MOUNTED GRAPHIC PANELS FOR A **SMOOTH SEAMLESS APPEARANCE**. WIDE SELECTION OF SYSTEM CONFIGURATIONS AVAILABLE.

FEATURES

- Aluminium frame and posts
- Steel circular bases
- Fusion EC - stands for easy carry
- Fusion EC kit breaks down into lengths no longer than 1000mm
- A4 portrait / landscape literature units are available
- Carry bags are available for Fusion & Fusion EC
- To add individuality red or blue acrylic base covers are available for the steel bases.
- Light fitting - holds any of the spotlights shown opposite
- 2000 x 1000mm graphics for straight frames
- 2000 x 1000mm graphics for inside curve frames
- 2000 x 1008mm graphics for outside curve frames



1 Attach base

2 Join post

3 Join frame

4 Connect frame corner

5 Twist in light fitting

plex
DISPLAY
modular display systems

SYSTEMS

FUSION CURVED SYSTEM



FUSION X SHAPED SYSTEM



Front Runner

- 1. Koala
- 2. Savannah
- 3. Imperial
- 4. Cornflower
- 5. Emerald
- 6. Blaze
- 7. Coal
- 8. Silver
- 9. Regency



Prelude

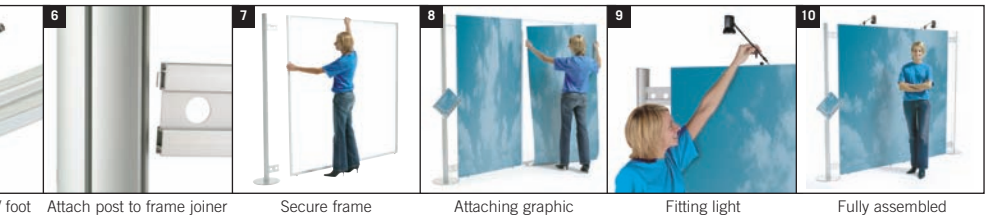
- 1. Shadow
- 2. Eclipse
- 3. Forest
- 4. Agean
- 5. Madison
- 6. Stellar
- 7. Flame
- 8. Royal
- 9. Platinum

Please note : Fabric colours shown are only given as a guide. Slight colour variations may occur between batches of material



- 1. Helios 3
50w hi spotlight
- 2. Helios 4
50w hi spotlight
- 3. Helios 5
50w hi spotlight
- 4. Helios 7
50w low voltage spotlight
- 5. Helios 8
50w low voltage spotlight
- 6. Helios 9
150w halogen flood
- 7. Helios 10
150w halogen flood

MODULAR DISPLAY SYSTEMS



6 Attach post to frame joiner 7 Secure frame 8 Attaching graphic 9 Fitting light 10 Fully assembled

INIUM PROFILE

8 CONFIGURATIONS

CURVED AND STRAIGHT

2 YEAR WARRANTY

SPECIFICATIONS

GRAPHIC PANEL SIZE

Straight = 2000 x 1000mm

Inside curve = 2000 x 1000mm

Outside curve = 2000 x 1008mm

SYSTEM SIZES

Fusion EC (easy carry) kit components dismantle down to 1000mm long sections

Fusion kit components do not dismantle but are a maximum of 2000mm long

WEIGHTS

Fusion EC post kit inc base (1 post) = 9.6kg

Fusion post kit inc base (1 post) = 9.5kg

330mm Ø circular base inc. fixing = 5.4kg

Post to frame joining kit (for 1 post) = 0.4kg

Fusion EC frame (straight or curved) = 3.4kg

Fusion frame (straight or curved) = 3.3kg

Acrylic circular base cover = 0.3kg

A4 literature dispenser = 1.4kg

COMPONENT LIST

Post

2 x 1000mm oval extrusion *

1 x 2000mm oval extrusion **

2 x Flat joining bar*

1 x Post joining spigot*

1 x 330mm Ø steel base

1 x base joining spigot

1 x plastic end cap

Straight frame

2 x 936mm rectangular extrusion inc. 2 x clamps

4 x 998mm rectangular extrusion*

2 x 1996mm rectangular extrusion**

2 x frame joining spigot*

1 x light fitting

2 x frame foot

6 x length of steel tape

1 x plastic hanging extrusion

2 x frame joiner (one kit per frame)

Curved frame

2 x 938mm curved rectangular extrusion inc. 2 clamps

4 x 998mm rectangular extrusion*

2 x 1996mm rectangular extrusion**

2 x frame joining spigot*

1 x light fitting

2 x frame foot

6 x length of steel tape

1 x plastic hanging extrusion

2 x frame joiner (one kit per frame)

Frame to Post joining kit

2 x 150mm Decorative extrusion inc. 2 x clamps

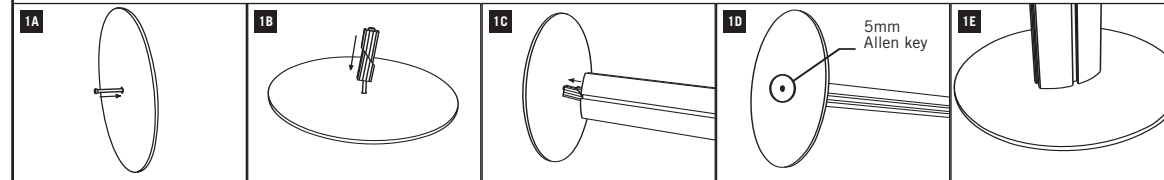
* Only available with Fusion EC (easy carry) kit

** Only available with Fusion kit

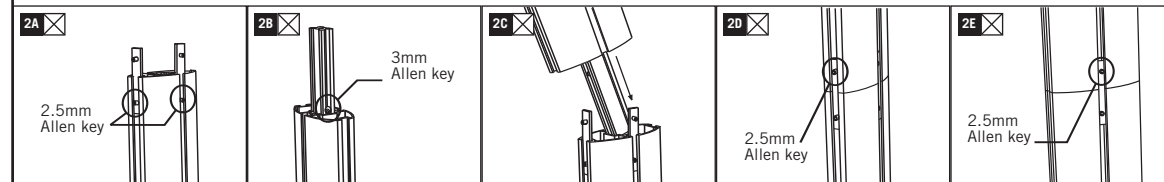
FUSION & FUSION EC (EASY CARRY)

ASSEMBLY INSTRUCTIONS

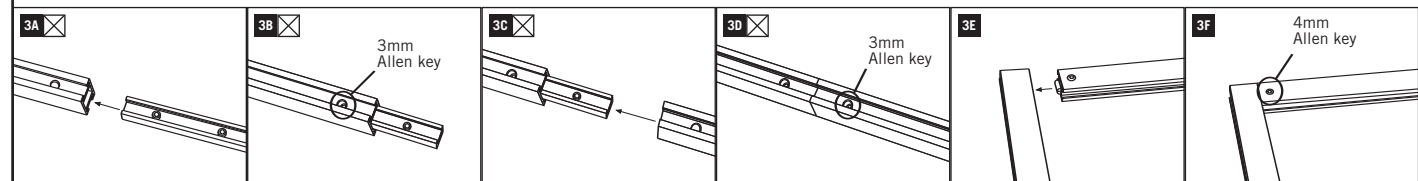
BASE ASSEMBLY (See 5A if using an acrylic base)



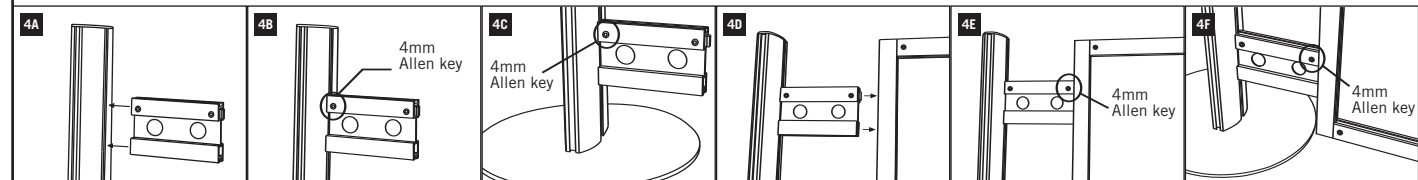
POST ASSEMBLY



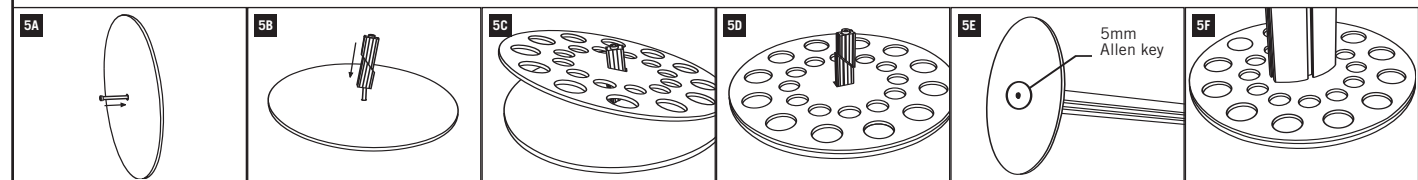
FRAME ASSEMBLY



JOINING POST TO FRAME



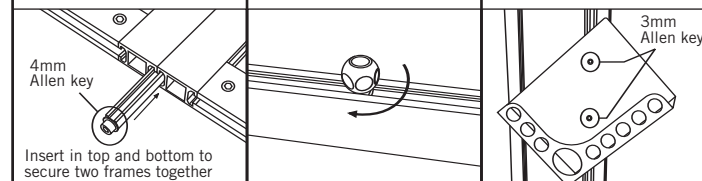
ACRYLIC BASE ASSEMBLY



JOINING FRAME TO FRAME

LIGHT FITTING/FOOT

ATTACH LITERATURE UNIT



☒ This step only applies to Fusion EC (Easy Carry) Assembly